

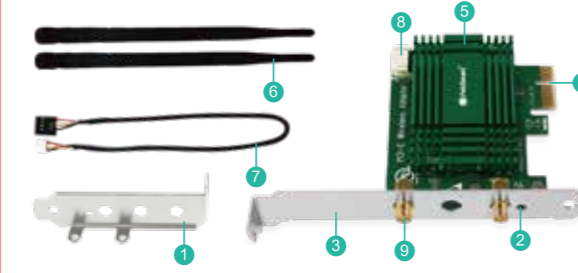


## WiFi 6 PCIE Wireless Network Adapter

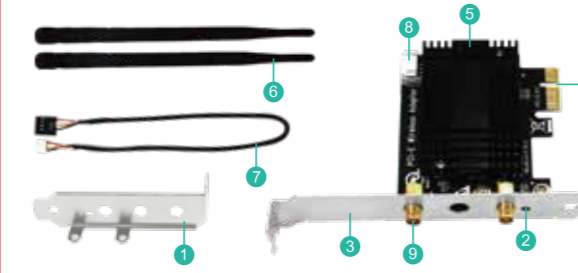
AX3000 AX5400  
Site:www.febsmart.com Contacts:support@febsmart.com

-1-

**AX3000 WiFi 6 3000Mbps PCIE Wireless Network Adapter**  
2.4GHz 574Mbps and 5GHz 2400Mbps



**AX5400 WiFi 6E 5400Mbps PCIE Wireless Network Adapter**  
2.4GHz 574Mbps,5GHz 2400Mbps and 6GHz 2400Mbps



- 1 Low profile bracket
- 2 Activity indicator
- 3 Full height bracket
- 4 PCIE X1 interface
- 5 HeatSink
- 6 2X Wi-Fi antenna
- 7 USB 2.0 cable
- 8 USB 2.0 connector
- 9 SMA connector

-2-

### Description:

AX3000 is based on Intel WiFi 6 AX200NGW WiFi module.It supports latest 802.11AX WiFi 6 technology,provides dual band WiFi connection for desktop computers on 2.4GHz 574Mbps and 5GHz 2400Mbps.It also comes with WiFi stereo adapter. It is a cost-effective way to add WiFi network and WiFi stereo function on PCs/Servers for online gaming,8K ultra HD video streaming and WiFi audio device data transmission.

### Technical Specifications:

WiFi module: Intel WiFi 6 AX200NGW  
Operation frequency: 5GHz and 2.4GHz  
Wireless standard: IEEE802.11AX WiFi 6  
Wireless signal type: 802.11AX WiFi 6 2X stream  
Working mode: Wi-Fi adapter (receiver) and wireless AP  
Max Wi-Fi speed: 2.4GHz 574Mbps,5GHz 160MHz 2400Mbps  
WiFi encryption: WEP,WPA/WPA2,WPA3,WPA-PSK/WPA2-PSK

### System Requirements:

- 1.Need to install WiFi network and WiFi stereo driver on Windows10 64bit and Windows 11 64bit systems.
- 2.Need to compile on Linux Kernels 5.1+ systems.
- 3.NOT for other Windows and MAC systems.

### Package List:

- 1X AX3000
- 1X User manual
- 2X WiFi antennas
- 1X USB 2.0 Cable
- 1X Mini driver CD
- 1X Mounting screw
- 1X Low profile bracket

-3-

### Description:

AX5400 is based on Intel WiFi 6E AX210NGW WiFi module.It supports latest 802.11AX WiFi 6E technology,provides tri-band WiFi connection for desktop computers on 2.4GHz 574Mbps, 5GHz 2400Mbps and 6GHz 2400Mbps.It also comes with WiFi stereo version adapter.It is a cost-effective way to add WiFi network and WiFi stereo function on PCs/Servers for online gaming,8K Ultra-HD video streaming and WiFi audio device data transmission.

### Technical Specifications:

WiFi module: Intel WiFi 6E AX210NGW  
Operation frequency: 5GHz,2.4GHz,6GHz  
Wireless standard: IEEE802.11AX WiFi 6E  
Wireless signal type: 802.11AX WiFi 6E 2X stream  
Working mode: Wi-Fi adapter (receiver) and wireless AP  
WiFi encryption: WEP,WPA/WPA2,WPA3,WPA-PSK/WPA2-PSK  
Max Wi-Fi speed: 2.4GHz 574Mbps,5GHz 160MHz 2400Mbps and 6GHz 2400Mbps

### System Requirements:

- 1.Need to install WiFi network and WiFi stereo driver on Windows10 64bit and Windows 11 64bit systems.
- 2.Need to compile on Linux Kernels 5.1+ systems.
- 3.NOT for other Windows and MAC systems.

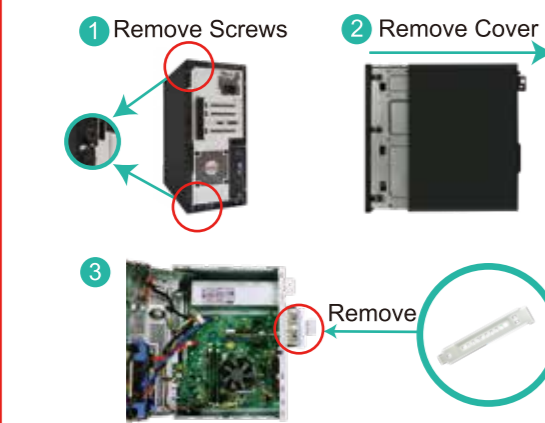
### Package List:

- 1X AX5400
- 1X User manual
- 2X WiFi antennas
- 1X USB 2.0 Cable
- 1X Mini driver CD
- 1X Mounting screw
- 1X Low profile bracket

-4-

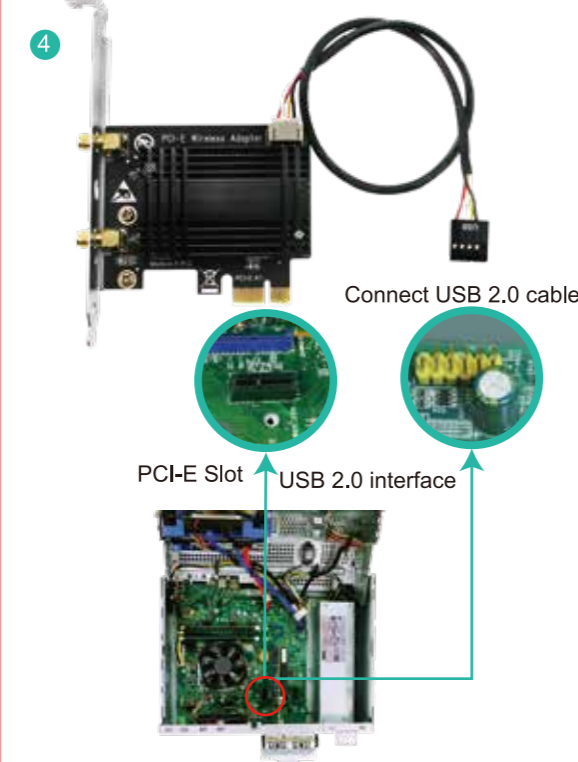
### Install WiFi Adapter Hardware on PCs:

**Step 1.**Switch OFF,unplug computer from main socket, unplug power-cord and other connected peripheral devices. Remove PC case cover.



**Step 2.**Find correct PCI express slot,insert this WiFi card into an empty PCI-E slot on motherboard.Find USB 2.0 interface and plug in the USB 2.0 cable.PLEASE NOTE: Slim PCs need change to low profile bracket

-5-



-6-

**Step 3.**Screw the antennas directly to wireless network card.If needed,the antennas can be adjusted and face to wireless AP's direction.It will improve the wireless network reception.Then reattach the PCs cover,put back all peripheral devices and turn on computer.

- 5 Screw on the WiFi Antenna



The add-on WiFi card

-7-

### How to get latest driver?

- 1.If PCs have CD-ROM,please open Mini CD directly,refer to installation steps as below to complete driver installation.
- 2.If computers can not read CD,please try to download correct driver from our site www.febsmart.com or contact us at support@febsmart.com
- 3.Get driver from www.Intel.com,search "AX200NGW" or "AX210NGW", and download driver for PCs.

### Find best way to install driver

- 1.PC is online.Have internet connection already. Link to www.intel.com,search "AX200NGW" or "AX210NGW", find latest driver for Windows10/11 64bit and install driver to activate this WiFi card.
- 2.PC is offline.No internet connection. Need to install driver from Mini CD and select correct driver by hand.Refer to driver installation steps as below.

### Install Driver on Supported System:

**Step 1.Know PC System Version**  
1.Windows 10/11-Desktop-Left click select "This PC"-Right-click select "Properties"-Check info "Windows Edition" and "System Type".Make sure Windows system is Windows10/11 64bit.

-8-

**Step 2.**Select Correct Driver from Mini CD. Open Mini CD then refer to steps as below:

**Windows 10/11 64bit Users:**  
AX3000 and AX5400 compatible with Windows 10/11 64bit system.Both these two models share installation steps on Windows 10/11 64bit.So Windows users please click "WiFi Network Driver" and "WiFi Stereo Driver" from Mini-CD.

**Linux Kernels Users:**  
1.AX3000 supports Linux Kernel 5.1+.Linux users please select from path:Mini-CD-Linux-AX3000,get the source code.  
2.AX5400 supports Linux Kernel 5.1+.Linux users please select from path:Mini-CD-Linux-AX5400,get the source code.

**Step 3.**Install WiFi driver on Windows10/11 64bit.  
1.Double right-click the software and running software.



WiFi Network Driver

-9-

2.Click "Next".



3.Accept license,Click "Install".

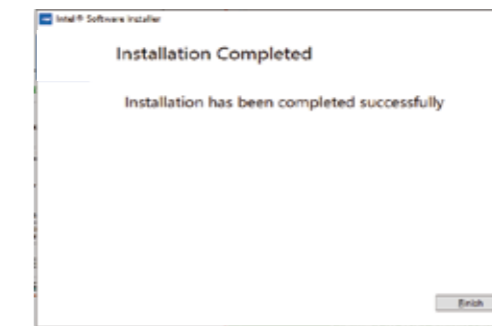


-10-

4.Waiting the installation.



5.Installation done,click "Finish".Restart PC.



-11-

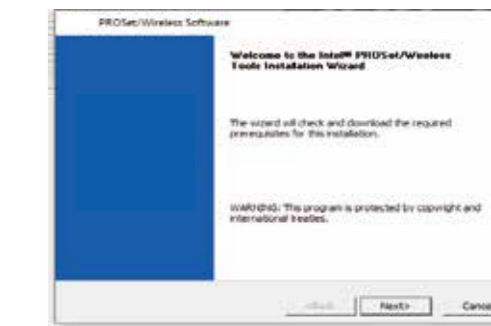
**Step 4.**Install WiFi Stereo driver.

1.Double right-click the software and running software.



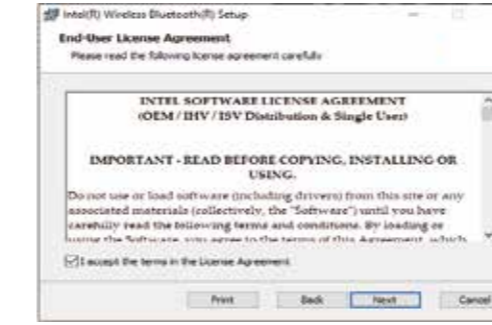
WiFi Stereo Driver

2.Click "Next".

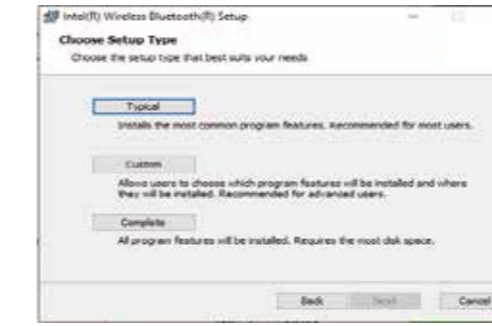


-12-

3.Accept license,Click Install.

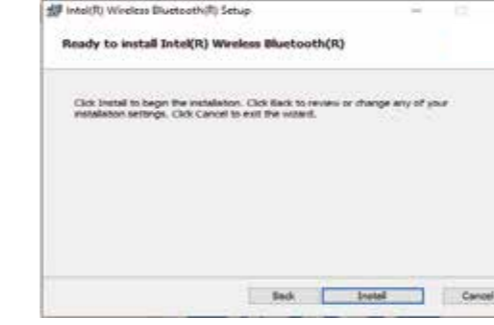


4.Choose setup type,Click "Typical".

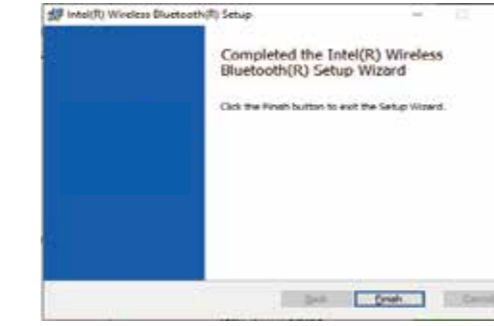


-13-

5.Click "Install"



6.Click "Finish",WiFi Stereo driver installation done.



-14-

### Connect to WiFi Stereo Device

- 1.Locate the task bar in the bottom right corner of your desktop.
- 2.Click WiFi stereo icon.And follow windows reminder to connect it to the WiFi audio device.

### Connect to Internet

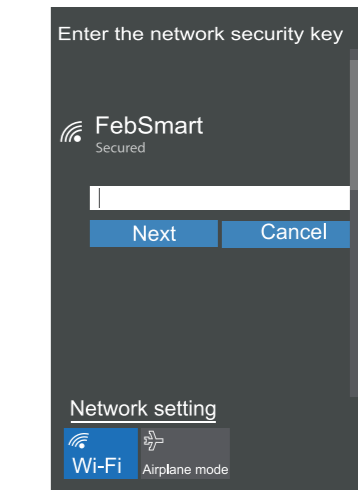
- 1.Locate the task bar in the bottom-right corner of PC's desktop.
- 2.Select the wireless icon as below on Windows 10/11 64bit system.



Windows10/11

-15-

3.Select WiFi signal around PCs,fill correct password and connect to it.Afterwards enjoy super speed internet.



Windows 10/11

### How to contact with us?

Our Site: www.febsmart.com  
Support: support@febsmart.com

-16-