



PCIE X4 USB 3.1 GEN2 10Gbps Card

FS-A5-Pro FS-A3C2-Pro
Site:www.febsmart.com Email:support@febsmart.com

1

FS-A5-Pro PCI Express 3.0 X4 to USB 3.1 GEN2 10Gbps Expansion Card.5X 10Gbps USB-A Ports.



2

FS-A3C2-Pro PCI Express 3.0 X4 to USB 3.1 GEN2 10Gbps Expansion Card.3X USB-A & 2X USB-C 10Gbps Ports.



FS-A5-Pro Description:

FS-A5-Pro is a PCI Express 3.0 X4 to 5X 10Gbps max USB 3.1 GEN2 type A ports expansion card.It is based on ASMedia ASM3142 USB 3.1 GEN2 16Gbps bandwidth host controller and the VIA Lab VL822 10Gbps USB 3.1 GEN2 hub chipset.It will light up 5X USB-A ports devices on users PCs. The 5X USB-A ports will share 16Gbps total bandwidth.It is built in FebSmart Self-Powered Technology,specially design -ed for high power consumption USB 3.1 GEN2 devices such as industrial cameras,VR-systems,VR-sensors USB HDD/SSD enclosures and USB NVME enclosures.It is designed on PCIE X4 interface,will work on PCIE X4,X8,X16 slot.It is mounted with full height bracket,will work on standard size PCs only,do not support slim PCs.

System Requirements:

- 1.Windows:**Plug and Play on Windows 11,10,8,1,8 (32/64bit) and Windows Server 2012,2012R2,2016,2019,2022 (32/64bit) systems. Need to install driver on Windows 7 (32/64bit) and Windows Server 2008,2008R2 (32/64bit) systems.
 - 2.Mac OS:**Plug and Play on MAC OS 10.9.x,10.10.x,10.12.x,10.13.x,10.14.x,10.15.x and later version systems.Do not support 10.11.x systems.
 - 3.Linux Kernel:**Supports most main stream Linux kernel.
- Package List:**
1X FS-A5-Pro,1X User manual,1X Mount-screw.

3

FS-A3C2-Pro Description:

FS-A3C2-Pro is a PCI Express 3.0 X4 to 3X USB-A and 2X USB-C 10Gbps max USB 3.1 GEN2 ports expansion card. It is based on ASMedia ASM3142 USB 3.1 GEN2 16Gbps bandwidth host controller and the VIA Lab VL822 10Gbps USB 3.1 GEN2 hub chipset.It will light up 3X USB-A ports devices and 2X USB-C devices on users PCs.The 5X USB ports will share 16Gbps total bandwidth.It is built in FebSm -art Self-Powered Technology,specially designed for high power consumption 10Gbps USB 3.1 GEN2 USB-A and USB-C devices such as industrial cameras,VR-systems, VR-sensors,USB HDD/SSD enclosures and USB NVME enclosures.It is designed on PCIE X4 interface,will work on PCIE X4,X8,X16 slot.It is mounted with full height bracket, will work on standard size PCs only,do not support slim PCs

System Requirements:

- 1.Windows:**Plug and Play on Windows 11,10,8,1,8 (32/64bit) and Windows Server 2012,2012R2,2016,2019,2022 (32/64bit) systems. Need to install driver on Windows 7(32/64bit) and Windows Server 2008,2008R2 (32/64bit) systems.
 - 2.Mac OS:**Plug and Play on MAC OS 10.9.x,10.10.x,10.12.x,10.13.x,10.14.x,10.15.x and later version systems.Do not support 10.11.x systems.
 - 3.Linux Kernel:**Supports most main stream Linux kernel.
- Package List:**
1X FS-A3C2-Pro,1X User manual,1X Mount-screw.

4

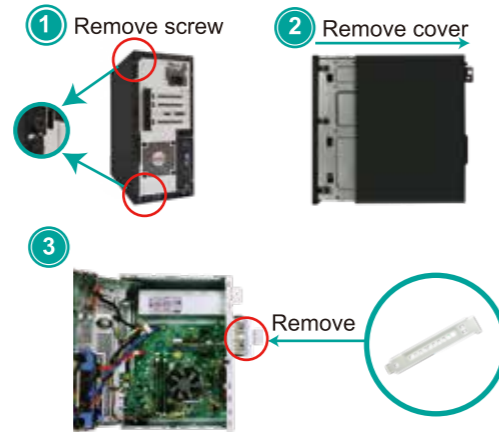
FebSmart Self-Powered Technology:

FebSmart Self-Powered Technology is a new solution to add more power supply on USB expansion cards.The old version PCI Express USB cards need to plug a power cable from desktop computers power supply unit.Some times even users put power cable on computer power supply unit,it still drops speed due to power limitation.PCI Express slot can provide 75W max almost 12V/6.25A power in total for PCIE devices.FebSmart add 1X voltage transformer chip on each USB port to transfer 12V to 5V and provide each USB port 3A max power supply.In other words,each USB port will get 5V/3A 15W for connected USB devices.Most of high power-consumption devices just need around 4~8W which means this USB expansion card can light up high power-consumption devices simult -aneously in full speed.To protect connected USB devices and users data,FebSmart built in safety electric circuit protector,voltage stable inductance,voltage stable capaci -tors on each USB port.Users do not worry data loss or burn USB devices anymore.Add superspeed,safe and easy install USB card on desktop PCs.

5

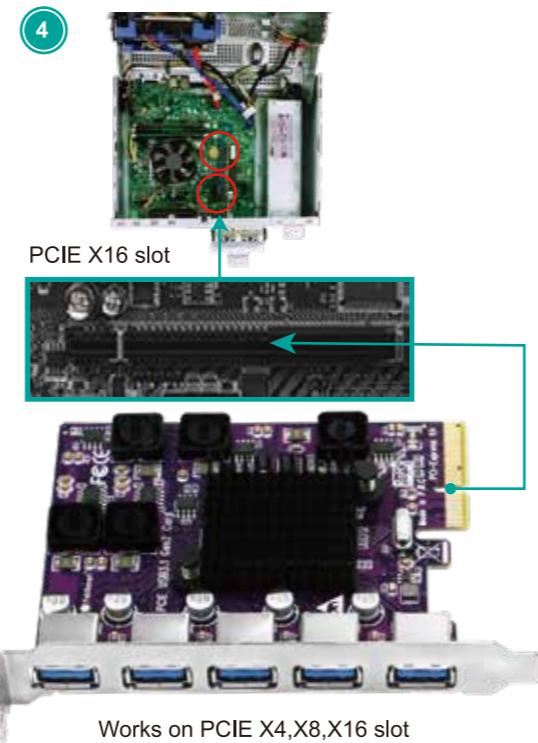
Add USB Card on Desktop PCs:

Step1,Switch OFF PC,unplug computer from main socket,unplug power cord and other connected peripherals.Remove the cover from computer case.



Step2,Find correct PCI Express slot from motherboard, insert USB card into an empty PCI-E X16 slot.

6



7

Step3,Reattach the computer cover,and put back removed peripherals,power on desktop computer.



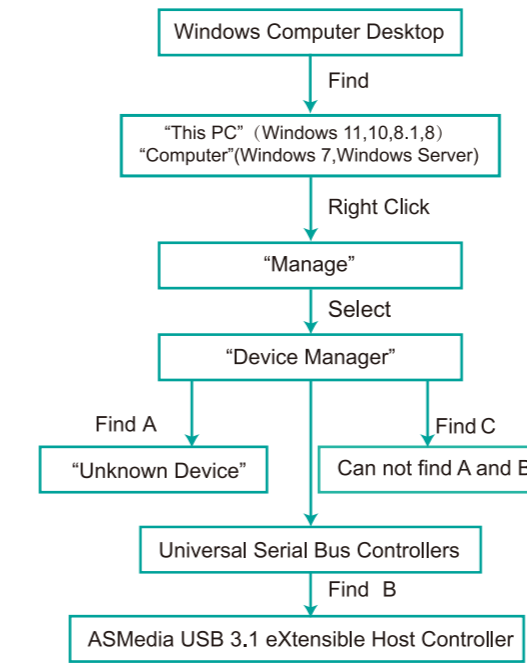
Added on USB Ports

Check If USB Card Was Detected on PCs:

1.Users can plug universal USB devices such as USB flash drive,keyboard,mouse etc.Check if computer can find these devices.If system read USB devices,means no need to install driver,can use these added on USB ports now.

8

2.Find this added on USB card hardware in Windows system "Device Manager" and check if system read it.



9

3.Click "Next"



4.Accept the license,click "Next".



12

A.Means PCs find hardware correctly,need to install driver. **B.Means** USB card hardware was detected correctly and system loaded driver already,users can use it now. **C.Means** PCs can not find the added on USB card and not load driver for USB card.Users need to re-plug USB card on motherboard PCIE slot,or better change to an active PCIE slot for USB card.

Install Driver on Desktop PCs:

- 1.FS-A5-Pro and FS-A3C2-Pro are based on ASMedia ASM3142 USB 3.1 GEN2 10Gbps host controller and VIA Lab VL822 USB 3.1 GEN2 hub.These models share the same installation steps on Windows 11,10,8,1,8,7 and Windows Server 2008,2008R2,2012,2012R2,2016,2019,2022 (32/64bit) systems.
- 2.Windows 11,10,8,1,8(32/64bit) and Windows server 2012, 2012R2,2016,2019,2022 will load driver automatically.If it can not read on your system or read "Unknown Device" in Windows "Device Manager"with "Error Code 10",users better change to another PCIE slot for this USB card.
- 3.Windows 7(32/64bit) and Windows server 2008,2008R2 (32/64bit) systems will read as"Unknown Device" in "Device Manager",users need to install driver,afterwards it will work.
- 4.FS-A5-Pro and FS-A3C2-Pro support plug and play on most main stream Linux kernel systems.
- 5.Plug and Play on MAC OS 10.9.x,10.10.x,10.12.x,10.13.x,10.14.x,10.15.x and later version systems.Do not support 10.11.x systems.

10

Step1,Users can download driver from our site www.febsmart.com then release the ZIP file,find the "Setup.exe".

Step2,Complete driver installation.

1.Double right-click "Setup.exe"



2.Waiting files ready to install.



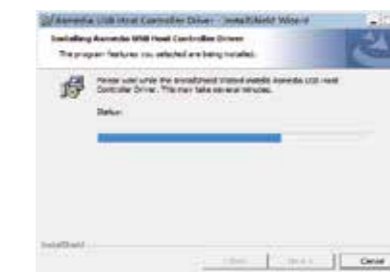
11

User FAQs:

- 1.How many USB devices will be lighted up simultaneously? Actually with FebSmart Self-Powered technology,users can run high power consumption devices in all USB ports now.
- 2.Why do my USB HDD/SSD enclosure or USB flash drive transfer data at a low speed? 1.If USB flash drives are USB 2.0 devices,will run in 2.0 speed. Make sure it is a USB 3.1 GEN2 10Gbps device,then it will hit the peak speed 10Gbps max. 2.USB HDD/SSD enclosure will get different speed,even it is USB 3.1 GEN2 10Gbps when put in SSD and HDD.SSD will transfer much faster than HDD.The test speed will also be affected by user PC's system disks.
- 3.Do these USB ports still support external USB hubs? Yes,this is an extensible USB card,will support USB hubs.
- 4.PCs report the code 10 error,how to fix this? Code 10 error means now the PCIE slot for this USB card no function or no bandwidth.Please change it to another active PCIE slot.A.This PCIE slot was disabled in BIOS.B.This PCIE slot bandwidth was occupied by other PCIE slot when it shared bandwidth with other PCIE slot. C.Motherboard manufacture may also define the PCIE slot function during the production, in this case,users better contact mother board manufacture.
- 5.Where can I get tech support,driver download and warranty? Contact Us:support@febsmart.com Driver Download:www.febsmart.com

14

5.Waiting for driver installation.



6.Click "Finish",and start using the new USB ports.



13