



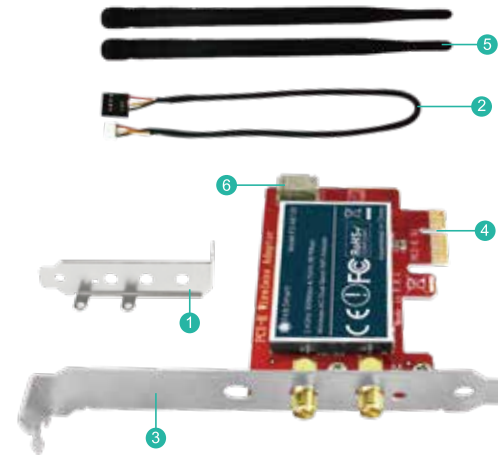
Wireless-AC PCIe WiFi Adapter

Model : FS-AE120SE

Site:www.febsmart.com Support:support@febsmart.com

1

FS-AE120SE Wireless-AC Dual Band 1200Mbps (2.4GHz 300Mbps and 5G 867Mbps) PCIe Wi-Fi Adapter



- 1 Low Profile Bracket
- 2 USB 2.0 Cable
- 3 Full Height Bracket
- 4 PCIe X1 Interface
- 5 2X Wi-Fi Antenna
- 6 USB 2.0 Connector

Product Description:

FS-AE120SE is a dual band wireless-ac 1200Mbps PCIe WiFi adapter.It offers ultra fast speed,stable and few loss WiFi connectivity at 2.4GHz 300Mbps and 5GHz 867Mbps

2

max speed for computer internet surfing,online gaming and Pro HD video streaming.Comes with WiFi stereo adapter for WiFi audio speakers,headphones or TWS earphones. It is a low cost and effective way to add PCIe wireless network and WiFi stereo adapter on office and home PCs.

Tech Specifications:

WiFi Standard:IEEE 802.11AC
 Operation Frequency:5GHz and 2.4GHz
 Major Chipset:Marvell AVASTAR 88W8897
 Compatible PCs: Standard and Slim Size PCs
 Working Mode:Wi-Fi Adapter and Wireless AP
 Wireless Encryption:WEP,WPA/WPA2,WPA3,WPA-PSK, WPA2-PSK (TKIP/AES)
 Hardware Interface:PCI-E 2.0 X1,Works on PCIe X1,X4, X8,X16 slot,Comply with PCIe 1.X,2.X,3.X
 Max Wi-Fi Speed:2.4GHz 40MHz 300Mbps (802.11AC/N), 5GHz 80MHz 867Mbps (802.11AC)

System Requirements:

Driver Free on Windows 11,10(32/64bit),Windows 8.1,8 64bit and Windows Server 2012,2012R2,2016,2019,2022. Driver free on Chrome OS and Linux systems.

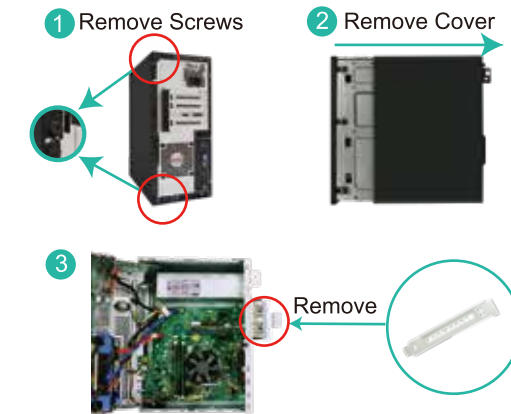
Package:

- | | |
|------------------------|-------------------|
| 1X FS-AE120SE | 1X User Manual |
| 2X WiFi Antenna | 1X Mounting Screw |
| 1X Low Profile Bracket | 1X USB 2.0 Cable |

3

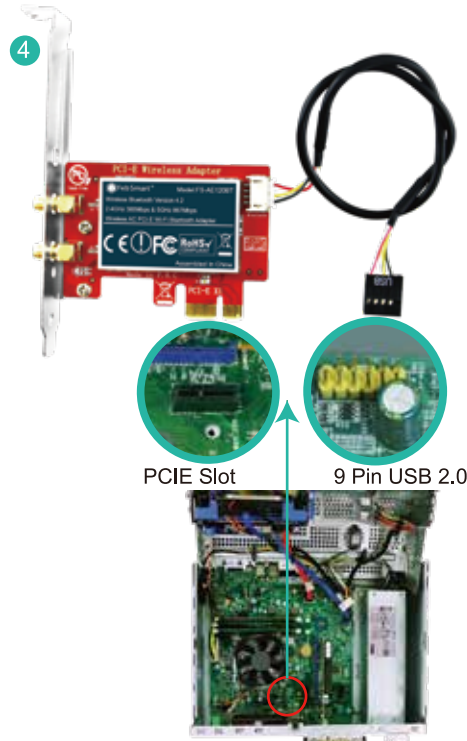
Install PCIe WiFi Card Hardware on PCs:

Step 1.Switch OFF,unplug computer from main socket, unplug power-cord and other connected peripheral devices. Remove PC case cover.



Step 2.Find correct PCI express slot and insert this wireless WiFi stereo card into an empty PCI-E slot on mother board. Find USB 2.0 9 Pin interface and plug in the USB 2.0 cable. NOTE:If using slim PCs,users need change to the low profile bracket by hand.

4



5

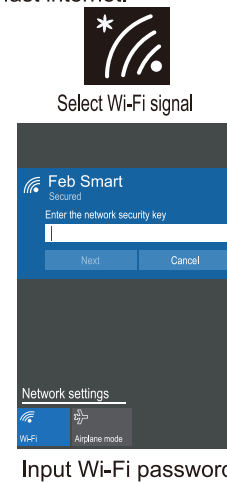
Step 3.Screw the antennas directly to wireless network card.If needed,the antennas can be adjusted and face to wireless AP's direction.It will improve the wireless network reception.Then reattach the PCs cover,put back all connected devices and turn on computer.

5 Screw on the WiFi Antennas



6

Step 4.System will load driver automatically.Then please select the Wi-Fi signal,fill correct password and connect it. Afterwards enjoy fast internet.



Step 5.Connect to WiFi stereo device.

- 1.Locate the task bar in the bottom right corner of your desktop.
- 2.Click WiFi stereo icon.And follow windows reminder to connect it to the audio device.

7

User FAQs:

- 1.What should I do if Windows system didn't load driver automatically?
 This FS-AE120SE is designed for Windows 11/10(32/64bit), Windows 8.1/8 64bit,Windows Server 2012,2012R2,2016, 2019,2022,Chrome OS and Linux systems.All compatible systems have built driver already.Most systems will load driver automatically.But if it did not load,please visit www.febsmart.com,download driver file and load driver by hand.
- 2.Why do my PCs always get poor signal or drop sometimes?
 A.Test Wi-Fi signal in PC area (same spot,same height),use cell phone to check if PC was placed in a Wi-Fi dead zone,if yes,please change PCs' location.
 B.If the distance is a far from roters,it will get poor signal or only 2.4G signal.To improve this,please consider changing the PCs or wireless roter's location.
- 3.Is the WiFi stereo need driver in supported system?
 No need to install driver both wifi and wifi stereo adapter.
- 4.Where I can get product tech-support ?
 Users can visit our site www.febsmart.com or send message to us at support@febsmart.com

8