



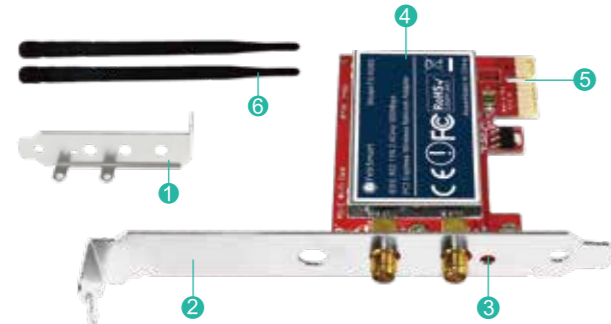
## Wireless N PCIE WiFi Adapter

Model : FS-N300 FS-N600HP

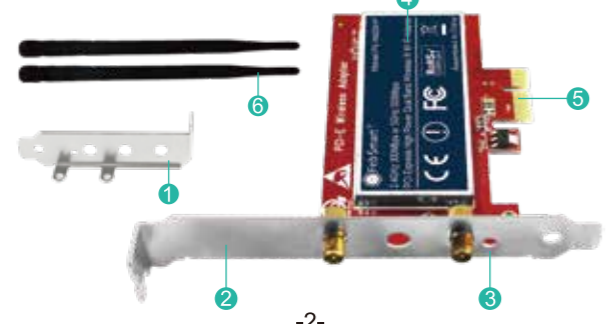
Site:www.febsmart.com Support:support@febsmart.com

-1-

**FS-N300** 802.11N 2.4GHz 300Mbps PCIE WiFi Adapter



**FS-N600HP** 802.11N Dual Band 600Mbps (2.4GHz 300Mbps and 5GHz 300Mbps ) PCIE WiFi Adapter



-2-

- 1 Low profile bracket
- 2 Full height bracket
- 3 LED indicator
- 4 Shield cover
- 5 PCI Express interface
- 6 2X WiFi antenna

### FS-N300 Features:

- 1.Add 802.11N 2.4GHz 300Mbps card on desktop PCs by PCI Express 2.0 X1 interface.
- 2.Select Qualcomm Atheros AR928X network solution, provide reliable and strong wireless connectivity.
- 3.Support 2X2 MIMO technology,allow PCs to pick up wireless network at 2.4GHz 300Mbps max speed.
- 4.Fully compliant with 64/128WEP,WPA,WPA2,WPA-PSK,WPA2-PSK(TKIP/AES) WiFi network encryption.
- 5.PCIE X1 design works on PCIE X1,X2,X4,X8,X16 slot.
- 6.Seamless connect to IEEE 802.11a/b/g/n/ac/ax routers.

### FS-N600HP Features:

- 1.Add 802.11N wireless dual band 600Mbps WiFi card on desktop PCs by PCI Express 2.0 X1 interface.
- 2.Select Qualcomm Atheros AR928X network solution, provide reliable and strong WiFi connectivity.
- 3.Support 2X2 MIMO technology,allow PCs to pick up WiFi network at 2.4GHz or 5GHz 300Mbps max speed.
- 4.Fully compliant with 64/128WEP,WPA,WPA2,WPA-PSK,WPA2-PSK(TKIP/AES) WiFi network encryption.

- 5.PCIE X1 design works on PCIE X1,X2,X4,X8,X16 slot.
- 6.Seamless connect to IEEE 802.11a/b/g/n/ac/ax routers.

### Package List:

**FS-N300**  
 1X FS-N300  
 1X User manual  
 1X Low profile bracket  
 2X WiFi antennas  
 1X Mount-screw

**FS-N600HP**  
 1X FS-N600HP  
 1X User manual  
 1X Low profile bracket  
 2X WiFi antennas  
 1X Mount-screw

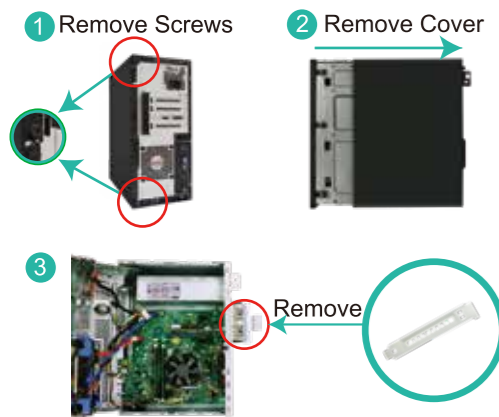
### Compatible System:

- 1.Driver free on Windows 11,10,8.1,8(32/64bit) and Windows Server 2012,2012R2,2016,2019,2022(32/64bit).
- 2.Need to install driver on Windows XP,7(32/64bit)and Windows Server 2003,2003R2,2008,2008R2(32/64bit).
- 3.Most of main stream Linux systems support plug and play,the driver for Linux is "ATH9K".
- 4.Users can visit our site www.febsmart.com to download driver for Linux systems and the Windows XP,7(32/64bit), Windows Server 2003,2003R2,2008,2008R2(32/64bit) systems.Please refer to the driver installation steps to complete the driver installation on the PC.

-3-

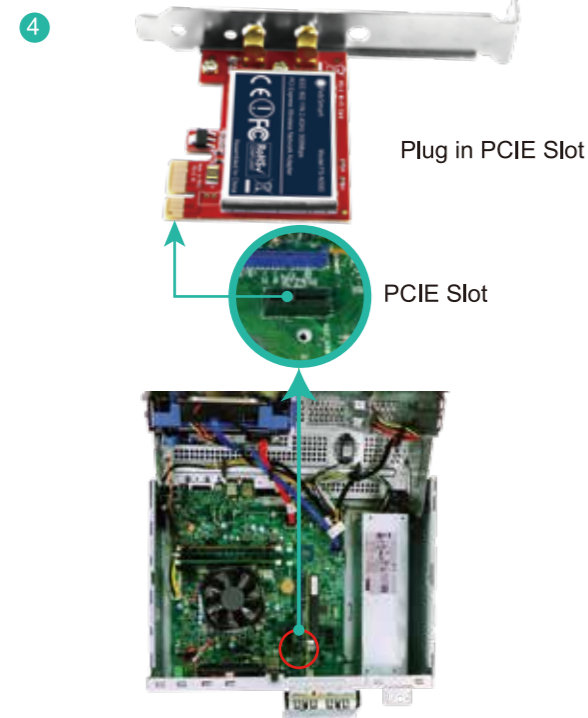
### Install PCIE WiFi Card on PCs:

**Step 1.**Switch OFF,unplug computer from main socket, unplug power-cord and other connected peripheral devices.Remove PC case cover.



**Step 2.**Find correct PCI express slot,insert this wireless card into an empty PCI-E slot on motherboard.  
PLEASE NOTE: Slim PCs need change to low profile bracket by hand.

-5-



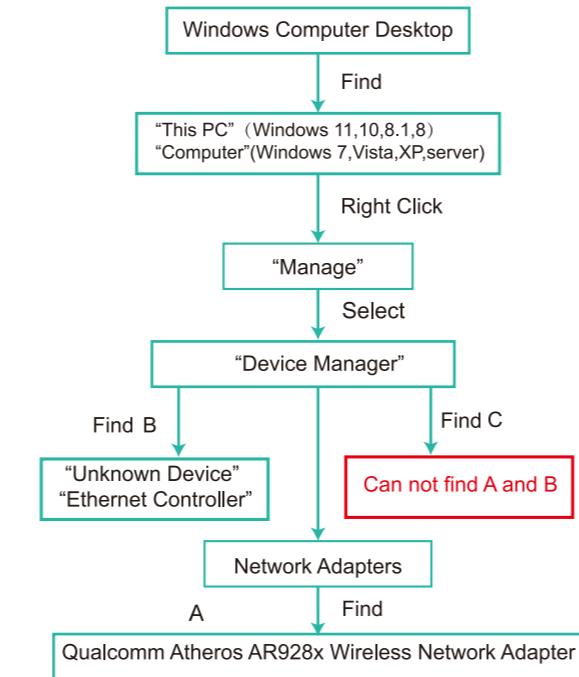
-6-

**Step 3.**Screw the antennas directly to wireless network card.If needed,the antennas can be adjusted and face to wireless AP's direction.It will improve the wireless network reception.Then reattach the PCs cover,put back all connected devices and turn on computer.



-7-

### Check if PCs Detected WiFi Card:



-8-

### Check if WiFi Card Works Correctly:

**A.Can** find "Qualcomm Atheros AR928X Wireless Network Adapter" in "Windows Device Manager-Network Adapters".Means users can use wireless network now. Windows 11,10,8.1,8 32/64bit and Windows Server 2012, 2012R2,2016,2019,2022 32/64bit systems,will support plug and play.If PCs can not find this network adapter,we suggest users change it to another active PCIE slot, because now this PCIE slot has no function.

**B.Can't** find "Qualcomm Atheros AR928X Wireless Network Adapter",but PC can find an "Ethernet Controller" (Unknown Device) in "Windows Device Manager-Other Device".Means users have assembled this card on PCs correctly.And PCs have detected the hardware,now users need to install drivers on PCs.Users need to install drivers on Windows 7,XP(32/64bit) and Windows Server 2008, 2008R2,2003,2003R2(32/64bit) systems.

**C.Can't** find A and B,means user did not put on this WiFi card well on PCIE slot.Or this PCIE slot is inactive.We suggest user change to another active PCIE slot.Or just remove and re-plug it back,then check if it works.

-9-

### Install Driver on User's PC:

- 1.Windows 11,10,8.1,8(32/64bit) and Windows Server 2022,2019,2016,2012R2,2012 32/64bit actually support plug and play,no need to install any driver.
- 2.Windows 7,XP,Server 2008,2008R2,2003,2003R2 32/64bit need to install driver by hand.Visit our site [www.febsmart.com](http://www.febsmart.com),and download driver "Atheros"

**Step 1.**Release the ZIP file "Atheros" and find "Setup.exe".

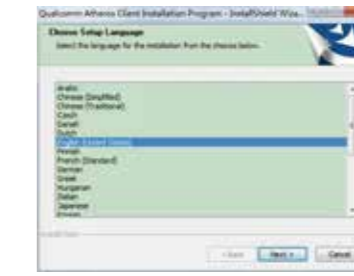
**Step 2.**Double right-click the driver and run installation.

- 1.Double right-click.

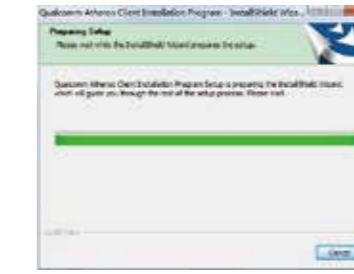


-10-

- 2.Select language.



- 3.Waiting for preparation files ready.



-11-

- 4.Click "Next".

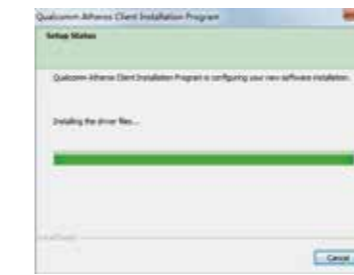


- 5.Accept the license.



-12-

- 6.Waiting for program installation.



- 7.Click "Finish",and use this card now.



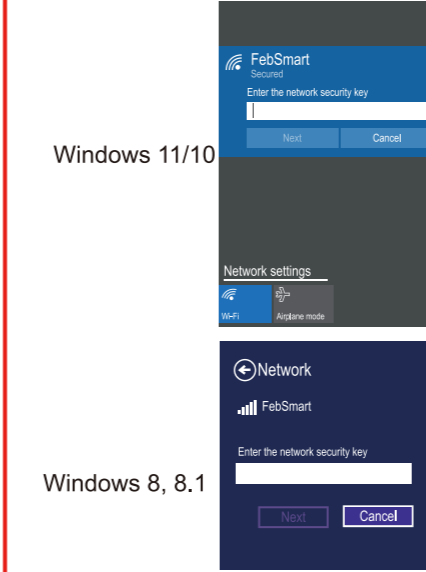
### Step 3.Connect to internet:

- 1.Locate the task bar in the bottom right corner of PC.
- 2.Select the wireless icon as below on each system.

-13-



- 3.Select the Wi-Fi signal,fill correct password and connect to it.Afterward enjoy fast internet.



-14-



### User FAQs:

**1.Why can't this card connect to 5G or can't find 5G signal on my PC?**

PCs find 5GHz signal but can't connect issue: 1.Connect to 2.4G first,make sure it is connected. 2.Find your 5G signal and connect,most of the time it will work.

PCs cannot find my 5G signal but 2.4G works issue: 1.Connect 2.4G signal first. 2.Restart PC or re-plug card and install driver again,Or in Device Manager-Remove this card and install driver again for it.Then PCs will find 5GHz and will allow PCs to connect.

**2.I am a Linux user,where can I get source code?**

Visit our site [www.febsmart.com](http://www.febsmart.com) to download driver ATH9K,then release the ATH9K file.After that users can compile on their desktop PCs.

-15-

### 3.Why does my PC always get poor signal or drop connection?

A.Test Wi-Fi signal in PC area (same spot,same height),use cellphone to check if your PC was placed in a Wi-Fi dead zone. If yes,please change PC's location.

B.If the distance is a little far from router,PCs will get poor signal or only 2.4G signal.To improve this,please consider changing the PCs or Wireless AP's location.Or buy more power Wi-Fi antennas,Here the WiFi antennas are 3dBi.

### 4.Why does my PC find 2.4G signal only?

PCs was placed too far away from router.5GHz band will support higher data speed but with narrower coverage. Wireless AP or Router's signal may not reach PCs location. Consider decreasing the distance between Router and PC.

### 5.Windows 11,10,8.1,8 32/64bit systems cannot auto-load driver,how to fix this ?

1.Confirm the WiFi card was sit on the PCIE slot well.Users can put it on another PCIE slot or just remove and re-plug it on Motherboard PCIE slot.

2.Make sure windows update is enabled.Or users can also install drivers by hand on these systems.

### 6.My PCs find few signals only,how to fix this?

Remove Wi-Fi card from PCs and install it again.At the same time,screw Wi-Fi antenna and make sure it is screwed well with the SMA connector.Most of the time it's WiFi antenna that wasn't screwed properly.

### 7.Where can I get support from FebSmart ?

Driver Download:[www.febsmart.com](http://www.febsmart.com)  
Tech-Support:support@febsmart.com

-16-