



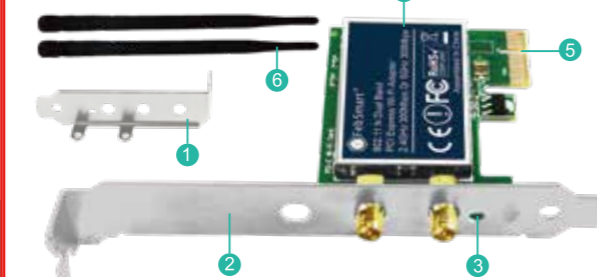
### Dual Band PCIE WiFi Adapter

Model: FS-N600 FS-N600SE

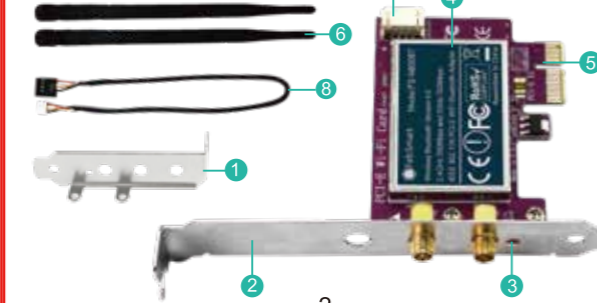
Site:www.febsmart.com Support:support@febsmart.com

-1-

**FS-N600** IEEE 802.11N Dual Band 600Mbps (2.4GHz 300Mbps and 5GHz 300Mbps ) PCIE WiFi Adapter.



**FS-N600SE** IEEE 802.11N Dual Band 600Mbps(2.4GHz 300Mbps and 5GHz 300Mbps) PCIE WiFi Adapter.



-2-

- 1.Low profile bracket
- 2.Full height bracket
- 3.Activity indicator
- 4.Shield cover
- 5.PCI Express interface
- 6.2X WiFi antenna
- 7.USB 2.0 connector
- 8.USB 2.0 cable

#### FS-N600 Features:

- 1.Add 802.11N wireless dual band 600Mbps WiFi card on desktop computers by PCI Express X1 interface.
- 2.Select Qualcomm Atheros AR946X network solution, provide reliable and strong wireless network connectivity.
- 3.Support 2X2 MIMO technology,allow PCs to pick up wireless network at 2.4GHz and 5GHz 300Mbps.
- 4.Fully compliant with 64/128WEP,WPA,WPA2,WPA-PSK,WPA2-PSK(TKIP/AES) wireless network encryption.
- 5.PCIE X1 design works on PCIE X1,X2,X4,X8,X16 slot.
- 6.Seamless connect to IEEE 802.11a/b/g/n/ac/ax routers.

#### FS-N600SE Features:

- 1.Add 802.11N wireless dual band 600Mbps WiFi card and WiFi stereo adapter on desktop PCs.
- 2.Select Qualcomm Atheros AR946X network solution, provide reliable and strong wireless connectivity.
- 3.Support 2X2 MIMO technology,allow PCs to pick up WiFi network at 2.4GHz 300Mbps and 5GHz 300Mbps.
- 4.Fully compliant with 64/128WEP,WPA,WPA2,WPA-PSK,WPA2-PSK(TKIP/AES) wireless network encryption.

-3-

- 5.PCIE X1 design works on PCIE X1,X2,X4,X8,X16 slot.
- 6.Seamless connect to IEEE 802.11a/b/g/n/ac/ax routers.
- 7.The WiFi stereo adapter for WiFi stereo device include WiFi headset,speaker,soundbar etc.

#### Package List:

##### FS-N600

- 1X FS-N600
- 2X WiFi antenna
- 1X Mount screw
- 1X Mini CD
- 1X Low profile bracket
- 1X User manual

##### FS-N600SE

- 1X FS-N600SE
- 1X Mini CD
- 2X WiFi antenna
- 1X Low profile bracket
- 1X USB 2.0 cable
- 1X Mount screw
- 1X User manual

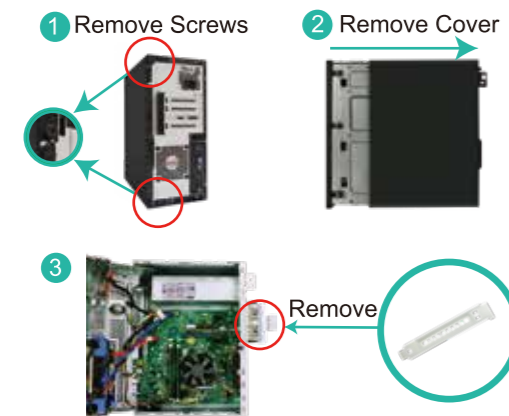
#### Compatible System:

- 1.Plug and Play on Windows 11,10,8.1,8 and Windows Server 2012,2012R2,2016,2019,2022(32/64bit).
- 2.Need to install driver on Windows XP,7(32/64bit) and Windows Server 2003,2003R2,2008,2008R2(32/64bit).
- 3.Most of main stream Linux systems support plug and play,the driver for Linux is "ATH9K". Users can download Windows system driver and Linux ATH9K driver from our site:[www.febsmart.com](http://www.febsmart.com).

-4-

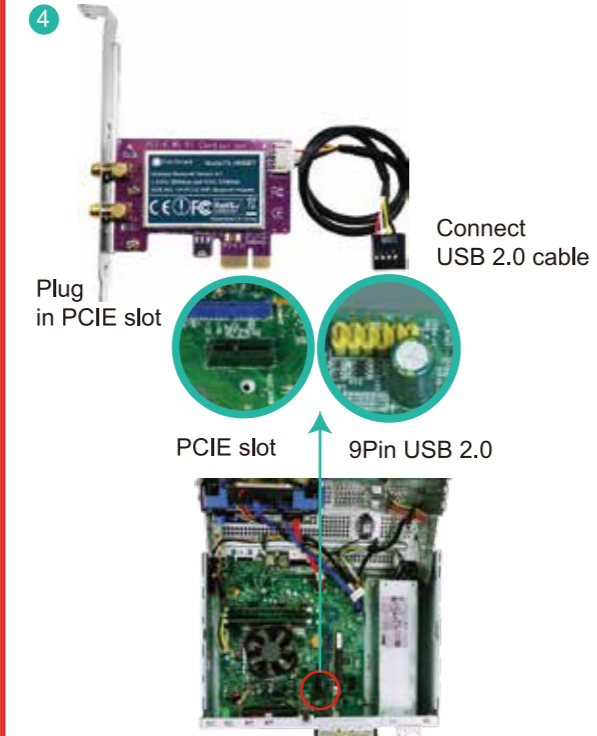
#### Install PCIE WiFi Card Hardware on PCs:

**Step 1.**Switch OFF,unplug computer from main socket, unplug power-cord and other connected peripheral devices,Remove PC case cover.



**Step 2.**Find correct PCI express slot,insert this PCIE WiFi card into an empty PCIE-E slot on mother board. Find USB 2.0 9Pin interface,plug in the USB 2.0 cable. NOTE: Slim PCs need change to low profile bracket.

-5-



-6-

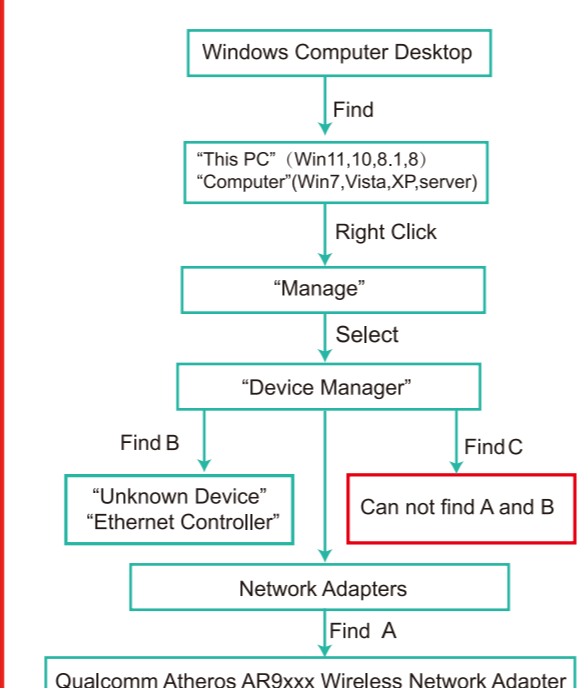
**Step 3.**Screw the the antennas directly to wireless network card.If needed,the antennas can be adjusted and face to wireless AP's direction.It will improve the wireless network reception.Then reattach the PCs cover,put back all connected devices and turn on computer.

- 5 Screw on the WiFi Antenna



-7-

#### Check if PCs Detected WiFi Card:



-8-

#### Check if WiFi Card Works Correctly:

- A.Can find "Qualcomm Atheros AR9xxx Wireless Network Adapter" in "Windows Device Manager-Network Adapters" Means users can use wireless network now.
- Windows 11,10,8.1,8 32/64bit and Windows Server 2012, 2012R2,2016,2019,2022 32/64bit systems will support plug and play.If these system PCs can't find this network adapter,we suggest users change this card to another active PCIE slot,because now this slot has no function.
- B.Can't find "Qualcomm Atheros AR9xxx Wireless Network Adapter",but PC can find an"Ethernet Controller"(Unknown Device) in "Windows Device Manager-Other Device".Means users have assembled this card on PCs correctly.And PC have detected hardware,just need to install drivers on PCs.Please install drivers in Mini CD.
- Windows 7,XP 32/64bit and Windows Server 2008, 2008R2,2003,2003R2 32/64bit systems need to install driver.
- C.Can't find A and B,means user did not put on this WiFi card well on PCIE slot.Or this PCIE slot is inactive. We suggest users change to another active PCIE slot. Or just remove and re-plug it back,then check if it works.

-9-

#### Install Driver on User's PC:

**Step 1.**Both FS-N600 and FS-N600SE share the same drivers on Windows 7,XP,Server 2008,2008R2,2003, 2003R2 32/64bit systems.Windows 11,10,8.1,8 32/64bit and Windows Server 2012,2012R2,2016,2019,2022 will support plug and play,no need to install driver anymore.

**Users can download** Windows system driver and Linux ATH9K driver from our site:[www.febsmart.com](http://www.febsmart.com).

**Step 2.**Double right-click the driver and run installation. 1.Double right-click.



-10-

2.Select language.



3.Waiting for preparation files ready.



-11-

4.Click "Next".

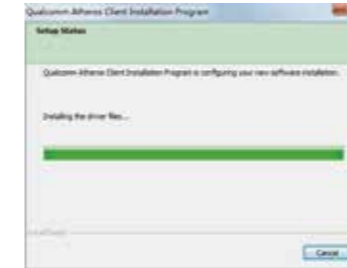


5.Accept the license.



-12-

6.Waiting for program installation.



7.Click "Finish",and use this card now.



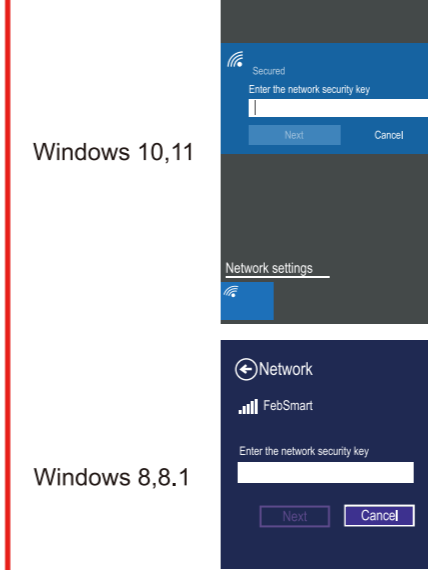
#### Step 3.Connect to internet:

- 1.Locate the task bar in the bottom right corner of PC.
- 2.Select the wireless icon as below on each system.

-13-

- Windows10
- Windows 8,8.1
- Windows 7

3.Select the Wi-Fi signal,fill correct password and connect to it. Afterward enjoy fast internet.



-14-



**Step 4.Connect to WiFi audio device.** 1.Locate the task bar in the bottom right corner of PC's desktop. 2.Click WiFi stereo icon.And follow windows reminder to connect it to the WiFi audio device.

#### User FAQs:

- 1.Why can't my PC connect to 5GHz or can't find 5GHz? PCs find 5GHz signal but can't connect issue: 1.Connect to 2.4G first,make sure it is connected. 2. Find your 5G signal and connect,most of the time it will work. PCs cannot find my 5G signal but 2.4G works issue: 1.Connect 2.4G signal first. 2. Restart PC or re-plug this Wireless card.Or in Device Manager-Remove this card and install driver again for it.Then PCs will find 5GHz and will allow PCs to connect.
- 2.I am a Linux user,where can I get source code?

-15-

3.Why does my PC always get poor signal or drop connection? A.Test Wi-Fi signal in PC area (same spot,same height),use cellphone to check if your PC was placed in a Wi-Fi dead zone. If yes,please change PC's location.

B.If the distance is a little far from router,PCs will get poor signal or only 2.4G signal.To improve this,please consider changing the PCs or Wireless AP's location.Or buy more power Wi-Fi antennas,Here the WiFi antennas are 3dB.

4.Why does my PC find 2.4G signal only? PCs was placed too far away from router.5GHz band will support higher data speed but with narrower coverage. Wireless AP or Router's signal may not reach PCs location. Consider decreasing the distance between Router and PC.

5.Windows 11,10,8.1,8 32/64bit systems cannot auto-load driver,how to fix this ? 1.Confirm the WiFi card was sit on the PCIE slot well.Users can put it on another PCIE slot or just remove and re-plug it on Motherboard PCIE slot.

2.Make sure windows update is enabled.Or users can also install driver by hand on these systems.

6.My PCs find few signals only,how to fix this? Remove Wi-Fi card from PCs and install it again.At the same time,screw Wi-Fi antenna and make sure it is screwed well with the SMA connector.Most of the time it's WiFi antenna that wasn't screwed properly.

7.Where can I get support from FebSmart? Driver Download:[www.febsmart.com](http://www.febsmart.com) Tech-Support:support@febsmart.com

-16-