



## PCIE USB 3.0 5Gbps Expansion Card

FS-U2S-Pro  
Site:www.febsmart.com Email:support@febsmart.com

1

### FS-U2S-Pro PCI Express 3.0 X1 to USB 3.0 5Gbps Expansion Card.2X 5Gbps USB-A Ports.



2

#### Description:

**FS-U2S-Pro** is a PCI Express to 2-Ports 5Gbps USB 3.0 expansion card.The 2X USB-A ports will share 5Gbps bandwidth.Built in FebSmart Self-Powered Technology, specially designed for high power consumption USB 3.0 devices such as industrial cameras,USB 3.0 HDD/SSD enclosures,VR-systems and VR-sensors.It also works with normal USB 2.0 and USB 3.0 devices such as USB flash drives,USB headphones,USB speakers,USB mice,USB keyboards,USB universal docking stations,USB KVM switches,USB hubs etc.Based on ASMedia ASM1042 5Gbps USB 3.0 host controller,will compatible with most Windows and Linux systems.PCIE X1 design will work on PCIE X1, X2,X4,X8,X16 slot.Mounted with full size bracket on USB 3.0 card and the low profile bracket in the package,will work on standard size PCs and slim PCs.

#### System Requirements:

- 1.Plug and Play on Windows 11,10,8.1,8 (32/64bit) and Windows Server 2012,2012R2,2016,2019,2022 (32/64bit). Need to install driver on Windows XP,Vista,7 (32/64bit) and Windows Server 2003,2003R2,2008,2008R2 (32/64bit).
- 2.Driver free on most main stream Linux systems.

#### Package List:

- 1X FS-U2S-Pro,1X User manual,1X Low profile bracket, 1X Mount-screw

3

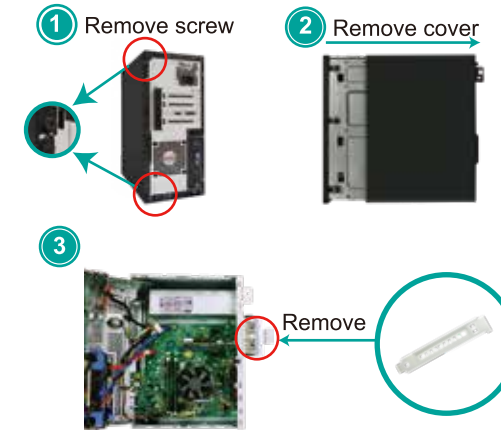
#### FebSmart Self-Powered Technology:

FebSmart Self-Powered Technology is a new solution to add more power supply on USB expansion cards.The old version PCI Express USB cards need to plug a power cable from desktop computers power supply unit.Some times even users put power cable on computer power supply unit,it still drops speed due to power limitation. PCI Express slot can provide 75W max almost 12V/ 6.25A power in total for PCIE devices.FebSmart add 1X voltage transformer chip on each USB port to transfer 12V to 5V and provide each USB port 3A max power supply.In other words each USB port will get 5V/3A 15W for connected USB devices.Most of high power-consumption devices just need around 4~8W which means this USB expansion card can light up high power-consumption devices simultaneously in full speed.To protect connected USB devices and users data,FebSmart built in safety electric circuit protector,voltage stable inductance, voltage stable capacitors on each USB port.Users do not worry data loss or burn USB devices anymore.Add superspeed,safe and easy install USB card on desktop PCs.

4

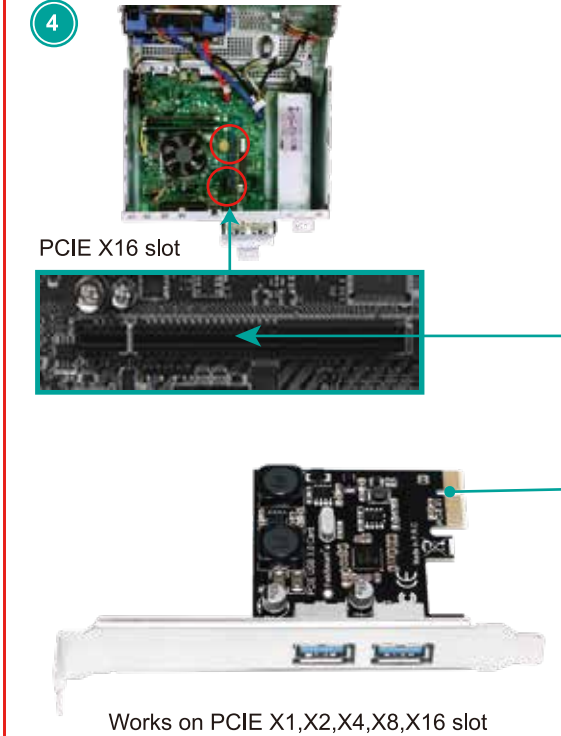
#### Add USB Card on Desktop PCs:

**Step1**,Switch OFF PC,unplug computer from main socket,unplug power cord and other connected peripherals.Remove the cover from computer case.



**Step2**,Find correct PCI Express slot from motherboard, insert USB card into an empty PCI-E slot.If using slim PCs, users need change to the low profile bracket which is in the package.

5



6

**Step3**,Reattach the computer cover,and put back removed peripherals,power on desktop computer.



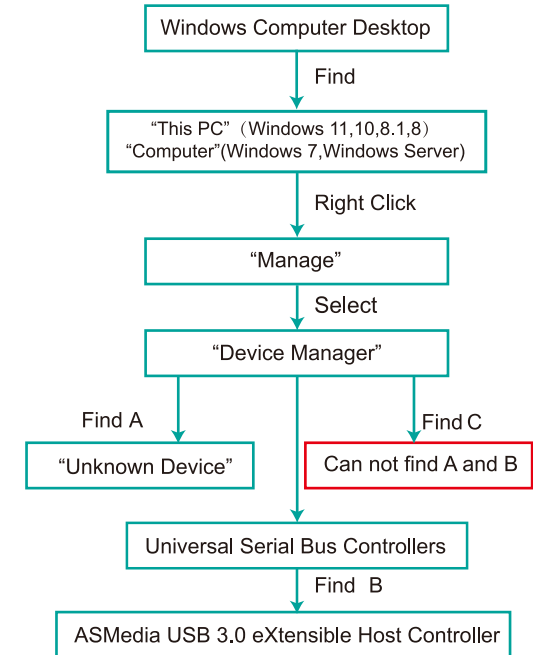
Added on USB Ports

#### Check If USB Card Was Detected on PCs:

1.Users can plug universal USB devices such as USB flash drive,keyboard,mouse etc.Check if computer can find these devices.If system read USB devices,means no need to install driver,can use these added on USB ports now.

7

2.Find this added on USB card hardware in Windows system "Device Manager" and check if system read it.



8

**A**,Means PCs find hardware correctly,need to install driver.  
**B**,Means USB card hardware was detected correctly and system loaded driver already,users can use it now.  
**C**,Means PCs can not find the added on USB card and not load driver for USB card.Users need to re-plug USB card on motherboard PCIE slot,or better change to an active PCIE slot for USB card.

#### Install Driver on Desktop PCs:

- 1.FS-U2S-Pro is based on ASMedia ASM1042 USB 3.1 GEN2 10Gbps host controller,it will work on Windows 11, 10,8.1,8,7 and Windows Server 2008,2008R2,2012, 2012R2,2016,2019,2022 (32/64bit) systems.
- 2.Windows 11,10,8.1,8(32/64bit) and Windows server 2012, 2012R2,2016,2019,2022 will load driver automatically.If it can not read on your system or read "Unknown Device" in Windows "Device Manager" with "Error Code 10",users better change to another PCIE slot for this USB card.
- 3.Windows 7(32/64bit) and Windows server 2008,2008R2 (32/64bit) system will read as"Unknown Device" in "Device Manager",users need to install driver,afterwards it will work.
- 4.FS-U2S-Pro support plug and play on most main stream Linux kernel systems.

9

**Step1**,Users can download driver from our site [www.febsmart.com](http://www.febsmart.com) then release the ZIP file,find the "Setup.exe".

**Step2**,Complete driver installation.

- 1.Double right-click "Setup.exe"



- 2.Waiting files ready to install.



10

- 3.Click "Next"



- 4.Accept the license,click "Next"



11

- 5.Waiting for driver installation.



- 6.Click "Finish",and start using the new USB ports.



12