

X540T2 Converged Ethernet Adapter PCI Express X8 to 2X 10Gbps RJ45 Ports



1

Product Description

X540T2 is a PCI Express X8 lane interface to 2X 10Gbps copper RJ45 interface network adapter. It is based on Intel X540-AT2 original ethernet controller, will provide stable and superspeed 10Gbps max network connection on Windows Desktop PCs, Windows Servers, Network Attached Storage (NAS), Soft Router and Linux PCs. Technical Specifications:

1. Supports Wake Up on LAN and Remote Boot up.
2. Supports Virtual Machine Device Queues (VMDq).
3. Supports PCI-SIG SR-IOV. Supports Flexible Port Partitioning.
4. Support Storage Over Ethernet iSCSI, FCoE and NFS Working Mode
5. Supports RJ45 Category 6 55 Meters, and Category 6A 100 Meters.
6. Supports 10GBASE-T, 1GBASE-T, and 100MBASE-T, 10MBASE-T Mode.
7. Supports System Interface Type: PCIe V2.1 (5.0 GT/s -), PCIe X8 Lane Interface.
8. Supports Intel Data Direct I/O Technology. Supports Simplified I/O Virtualization.
9. Supports IEEE 802.3 Auto-negotiation on IEEE 802.3an, 802.3u, and 802.3ab.

2

ATTENTION:

1. PCIe X8 interface design, works on PCIe X8, X16 slot. Users must check if PCs have active and open PCIe X16 (X8 Lane or X16 Lane) slot. When using PCIe X16 slot with x1, x2, x4 lane this ethernet adapter will work on 2X 1Gbps mode.
2. Low profile bracket in the package and full height bracket mounted on this network adapter. Users need change to low profile bracket if using slim PCs.

Compatible System:

1. Windows Server 2022, 2019, 2016, 2012R2, 2012 and Windows 11, 10, 8.x, 7 (32/64bit) systems.
2. Linux kernels drivers IXGBE.
3. RHEL 7.9, RHEL 8.4 / 8.5, RHEL7.0 to 7.8 and 8.0 to 8.3.
4. SLES 12 SP5, SLES 15 SP3, SLES 12 SP4 and previous 15 SP2 and previous.
5. Ubuntu 18.04 and later systems, Ubuntu 20.04, and later systems.
6. FreeBSD 12.2, 13, 12.1 and previous systems.

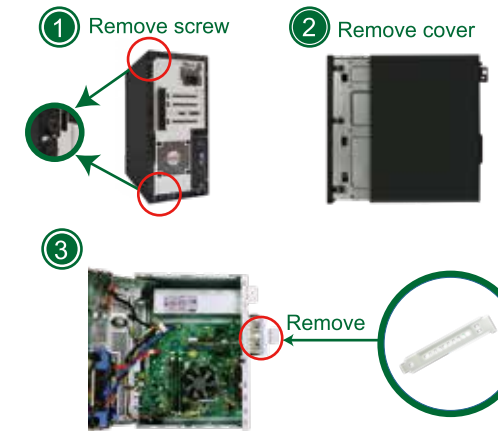
Package List:

- 1X X540T2 1X User manual 1X Mini CD
1X Mount screw 1X Low profile bracket

3

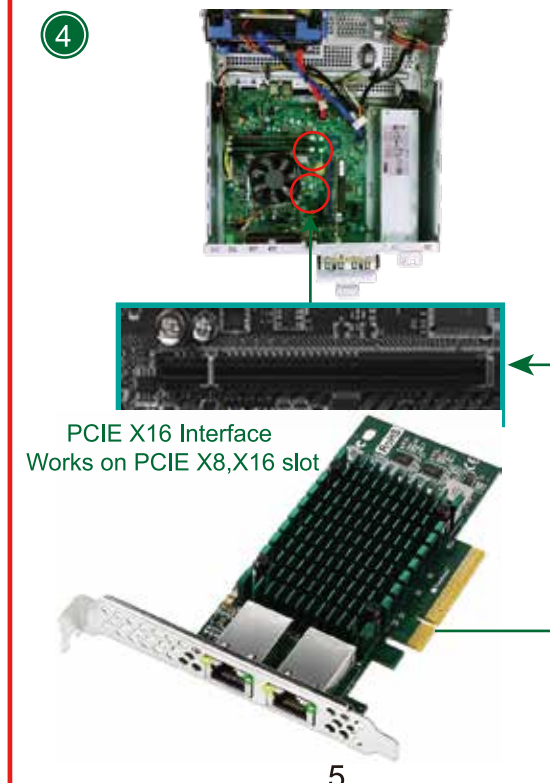
Add Network Card on Desktop PCs:

Step1, Switch OFF PC, unplug computer from main socket, unplug power cord and other connected peripherals. Remove the cover from computer case.



Step2, Find correct PCI Express X16 slot from motherboard, insert PCI Express network card into PCI Express slot.

4



5

Step3, Reattach the computer cover, and put back removed peripherals, power on desktop computer.



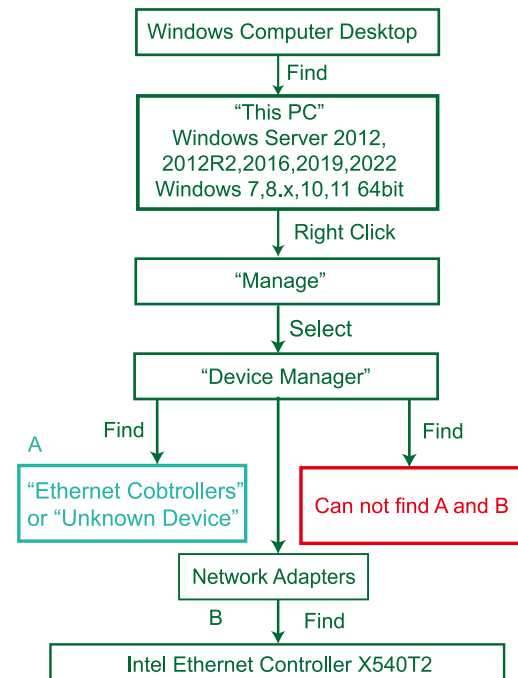
Added on network card RJ45 port

Check If Network Card Works on Computers:

1. Users can plug in RJ45 cable from routers check if PC can detect the network or not. If PC has detected the network, then no need to read the rest of this user manual. If PC cannot detect the network, then go on to read the rest of the user manual.

6

2. Find this added on network card hardware in Windows system "Device Manager" and check if system reads it.

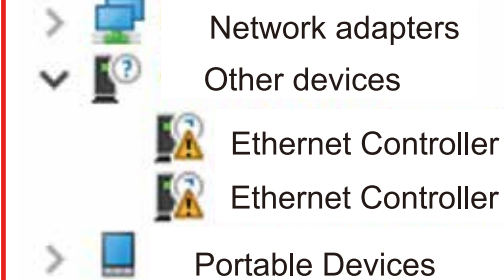


7

A, Means PCs find hardware need to install driver. This will happen on Windows 11, 10, 8.x, 7 32/64bit systems.
B, Means network card hardware correctly placed and system load driver already can use it now. This will happen on Windows Server 2012, 2012R2, 2016, 2019, 2022, Windows 7, 8.x, 10, 11 64bit.
C, Means PCs can not find the added on network card hardware. 1. Users can re-plug network card on motherboard PCI Express slot. 2. Users better change to another active PCI Express slot.

Install Driver on Desktop PCs:

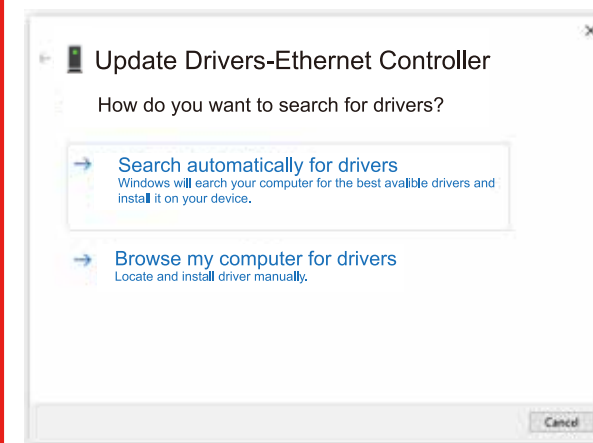
User can check if desktop PCs detected the hardware. Follow the path: This PC -> Manage -> Device Manager -> Other Devices. Users can find 2X "Ethernet Controller" as below, then refer the rest of the user manual to install the driver.



8

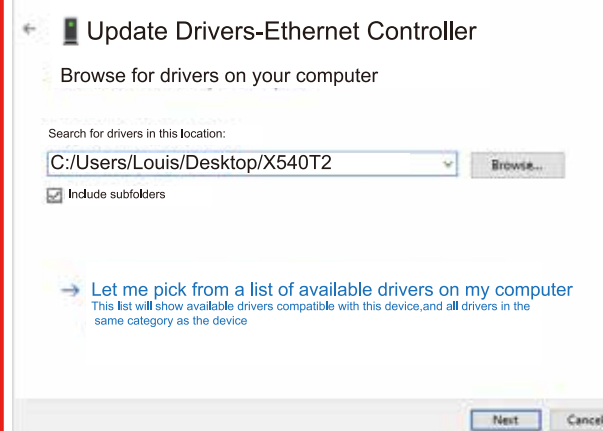
Step1, Users can get the driver for this X540T2 from the package Mini-CD or just visit the website in the package box to download driver pack "X540T2 Driver". This driver install steps are only used on Windows 7, 8.x, 10, 11 32/64bit.

Step2, Select "Ethernet Controller", then right-click the mouse and select "Update driver", then select "Browse my computer for drivers".



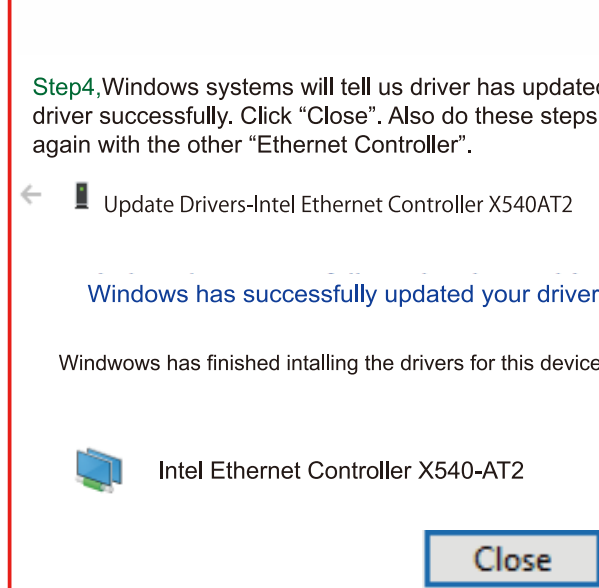
9

Step3, Select the released driver pack file folder "X540T2" or select the driver Mini-CD. And click "Next". Windows system will search for the driver from the selected file folder and load the driver automatically.



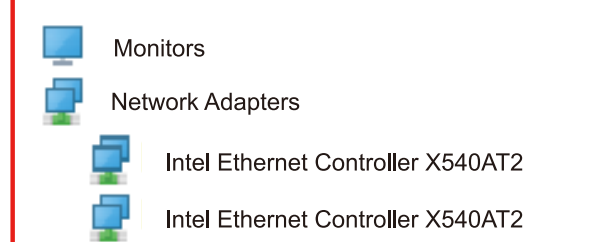
10

Step4, Windows systems will tell us the driver has been updated successfully. Click "Close". Also do these steps again with the other "Ethernet Controller".



11

Step5, When installed drivers for 2X "Ethernet Controller" Windows system will read this X540T2 network card as 2X "Intel Ethernet Controller X540-AT2". Then users can enjoy 10Gbps network now.



12