



PCI Express WiFi Bluetooth Adapter

Model : FS-AE120BT

Official Site: www.febsmart.com
Tech-support: support@febsmart.com

FS-AE120 Wireless AC 1200Mbps(2.4GHz 300Mbps and 5G 867Mbps) PCIE Wi-Fi Bluetooth 4.2 Adapter



- ① Low Profile Bracket
- ② Bluetooth Cable
- ③ Full Height Bracket
- ④ PCIE X1 Interface
- ⑤ 2X Wi-Fi Antenna
- ⑥ Bluetooth Connector

Product Description:

FS-AE120BT is an dual band wireless ac 1200Mbps PCIE WiFi bluetooth adapter.It offers ultra fast speed,stable and few loss wireless connectivity at 2.4GHz300Mbps and 5GHz

1

867Mbps max speed for computer internet surfing,online gaming and Pro HD video streaming.Comes with bluetooth version 4.2 for bluetooth speakers,headphones,or TWS earphones.It is a low cost and effective way to add PCIE wireless network and bluetooth adapter office and home use PCs.

Tech Specifications:

WiFi Standard: IEEE 802.11AC
Bluetooth Version:Bluetooth 4.2
Operation Frequency: 5GHz and 2.4GHz
Major Chipset: Marvell AVASTAR 88W8897
Compatible PCs: Standard and Slim Size PCs
Working Mode: Wi-Fi Adapter and Wireless AP
Wireless Encryption: WEP,WPA/WPA2,WPA-PSK/WPA2-PSK (TKIP/AES)
Hardware Interface: PCI-E 2.0 X1,Works on PCIE X1,X4, X8,X16 slot,Comply with PCIE 1.X,2.X,3.X
Max Wi-Fi Speed: 2.4GHz 40MHz 300Mbps (802.11AC/N), 5GHz 80MHz 867Mbps (802.11AC)

System Requirments:

Driver Free on Windows 10 (32/64bit),Windows 8.1 64bit, Windows 8 64bit,Windows Server 2012,2012R2,2016,2019, Chrome OS and Linux systems.NOT support other systems.

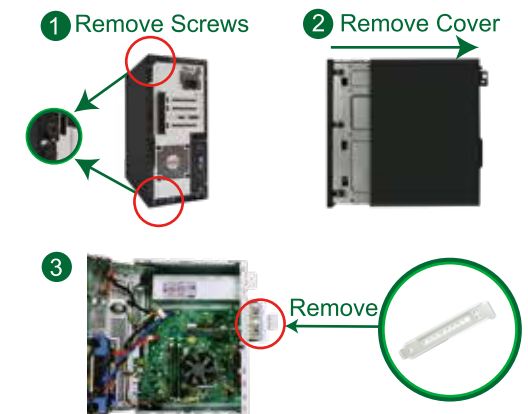
Package:

- | | |
|------------------------|--------------------|
| 1X FS-AE120BT | 1X User Manual |
| 2X WiFi Antenna | 1X Mounting Screw |
| 1X Low Profile Bracket | 1X Bluetooth Cable |

2

Install PCIE WiFi Card Hardware on PCs

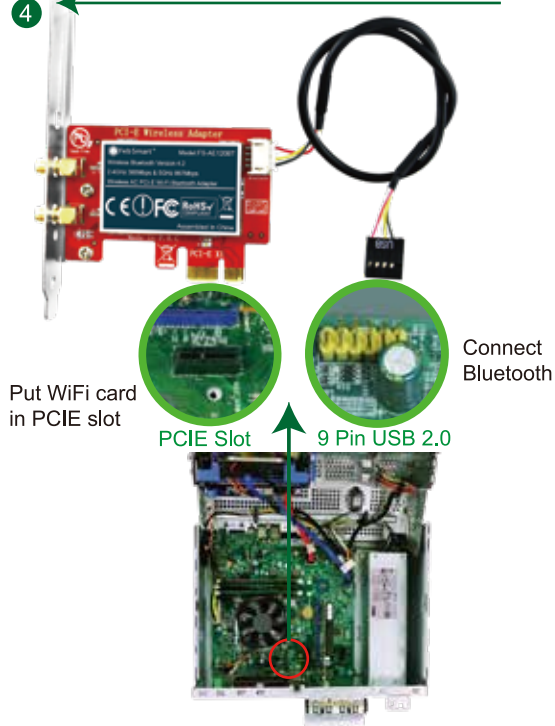
Step 1. Switch OFF, unplug computer from main socket, unplug power-cord and other connected peripheral device. Remove PC case cover.



Step 2. Find correct PCI express slot, insert this wireless bluetooth card into an empty PCI-E slot on motherboard. Find USB 2.0 9 Pin interface, plug in the bluetooth cable.

3

④ Slim PCs need change to low profile bracket



4

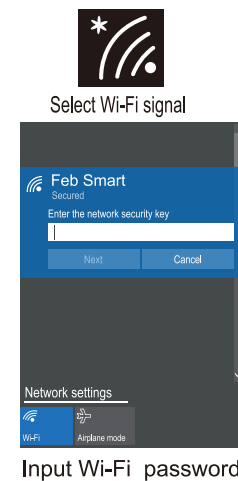
Step 3. Screw in the antennas directly to wireless network card. If needed, the antennas can be adjusted and face to wireless AP's direction. It will improve the wireless network reception. Then reattach the PC's cover, put back all connected device and turn on computer.

⑤ Screw on the WiFi Antenna



5

Step 4. System will load driver automatically. Then please select the Wi-Fi signal, fill correct password and connect to it. Afterwards enjoy fast internet.



Step 4. Connect to Bluetooth device.

- 1..Locate the task bar in the bottom right corner of your desktop.
- 2.Click Bluetooth icon. And follow windows reminder connect it to the Bluetooth device.

6

User FAQs:

1. What can I do if Windows system wasn't load driver automatically?

This FS-AE120BT is designed for Windows 10(32/64bit), Windows 8.1 64bit, Windows 8 64bit, Windows Server 2012, 2012R2, 2016, 2019, Chrome OS and Linux systems. All compatible system have build driver already. Most of system will auto load driver, but if it did not load. Please go to www.febsmart.com download driver file load driver by hand.

2. Why my PCs always get poor signal or drops sometimes?

- A. Test Wi-Fi signal in PC area (same spot, same height) by cell phone check if PC was placed in a Wi-Fi dead zone if yes, please change location for PCs.
- B. If the distance little long PCs, will get poor signal or only 2.4G signal. To improve this please consider change the PCs or Wireless AP's location.

3. Is the bluetooth need driver in supported system? Actually, no need to install driver both wifi and bluetooth.

4. Where can I get product tech-support ?

Users can visit our site www.febsmart.com or send message to us at support@febsmart.com

7