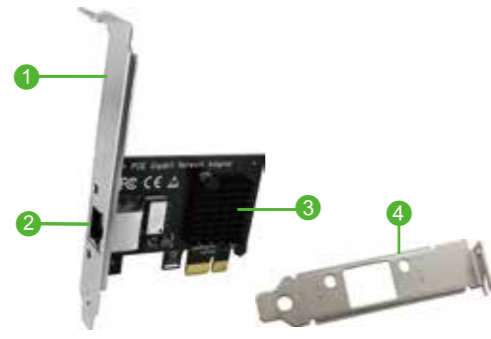




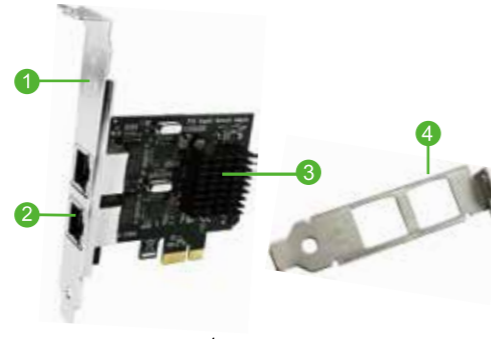
## PCI Express Gigabit Ethernet Adapter

Model: •FS-E1-Pro •FS-E2-Pro  
Site:www.febsmart.com Email:support@febsmart.com

### FS-E1-Pro Single Port PCIE Gigabit Ethernet Adapter



### FS-E2-Pro Dual Ports PCIE Gigabit Ethernet Adapter



- 1 Standard Size Bracket
- 2 RJ45 Interface
- 3 Heat Sink
- 4 Low profile bracket

#### FS-E1-Pro Product Description

FS-E1-Pro is a PCIE X1 gigabit network interface controller card. Allow desktop computers upgrade to latest gigabit ethernet by PCIE X1 slot. Will auto-communicate with router adjust ethernet speed to 10/100/1000Mbps.Supports link change wake up,Wake-On-LAN and remote wake-up. Supports 32-set 128-byte Wake-Up Frame pattern exact matching.Supports Microsoft WPI (Wake Packet Indication). Fully compatible with IEEE 802.3,IEEE 802.3u,IEEE 802.3ab. Supports IEEE 802.1P Layer 2 Priority Encoding and IEEE 802.1Q VLAN tagging.Supports IEEE 802.3az-2010 (Energy Efficient Ethernet) and Full Duplex flow control (IEEE 802.3x)

#### Compatible System:

**Windows:**Driver free on Windows 10,8.1,8,Server 2012, 2012R2,2016,2019(32/64bit) systems.Need to install driver on Windows 7,Vista,XP,Windows Server 2003,2003R2,2008, 2008R2(32/64bit) system.

**Linux Kernel :**Supports most main stream Linux,Unix kernel.  
**NOTE:**This model do not provide driver CD anymore,please visit our site [www.febsmart.com](http://www.febsmart.com) download driver.

#### Package List:

1X FS-E1-Pro 1X User manual  
1X Mount screw 1X Low profile bracket

2

### FS-E2-Pro Product Description

FS-E2-Pro is a dual ports PCIE X1 gigabit network interface controller card. Allow desktop computers upgrade to latest gigabit ethernet by PCIE X1 slot.Each port will auto-communicate with router adjust ethernet speed to 10/100/1000Mbps.Supports link change wake up,Wake-On-LAN and remote wake-up.Supports 32-set 128-byte Wake-Up Frame pattern exact matching.Supports Microsoft WPI (WakePacket Indication).Fully compatible with IEEE 802.3,IEEE 802.3u, IEEE 802.3ab.Supports IEEE 802.1P Layer 2 Priority Encoding and IEEE 802.1Q VLAN tagging.Supports IEEE 802.3az-2010 (Energy Efficient Ethernet) and Full Duplex flow control (IEEE 802.3x).Supports jumbo frame to 9K bytes, quad core Receive-Side Scaling (RSS) and Protocol Offload (ARP & NS),Microsoft NDIS5,NDIS6 Checksum Offload (IPv4,IPv6,TCP,UDP) and Segmentation Task-offload.

#### Compatible System:

**Windows:**Driver free on Windows 10,8.1,8,Server 2012, 2012R2,2016,2019(32/64bit) systems.Need to install driver on Windows 7,Vista,XP,Windows Server 2003,2003R2,2008, 2008R2(32/64bit) system.

**Linux Kernel :**Supports most main stream Linux,Unix kernel.  
**NOTE:**This model do not provide driver CD anymore,please visit our site [www.febsmart.com](http://www.febsmart.com) download driver.

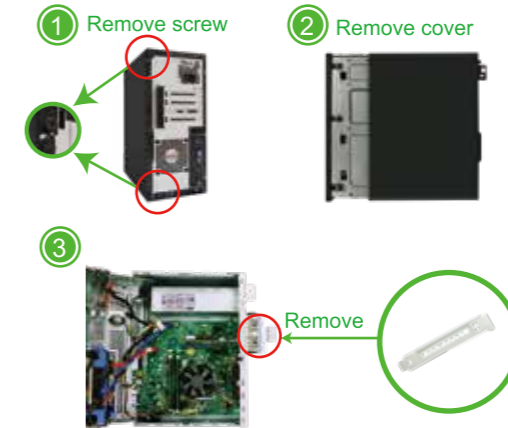
#### Package List:

1X FS-E2-Pro 1X User manual  
1X Mount screw 1X Low profile bracket

3

### Add Network Card on Desktop PCs:

**Step1,**Switch OFF PC,unplug computer from main socket,unplug power cord and other connected peripherals.Remove the cover from computer case.



**Step2,**Find correct PCI Express slot from motherboard, insert PCIE network card into an empty PCI-E slot.

4



5

**Step3,**Reattach the computer cover,and put back removed peripherals,power on desktop computer.



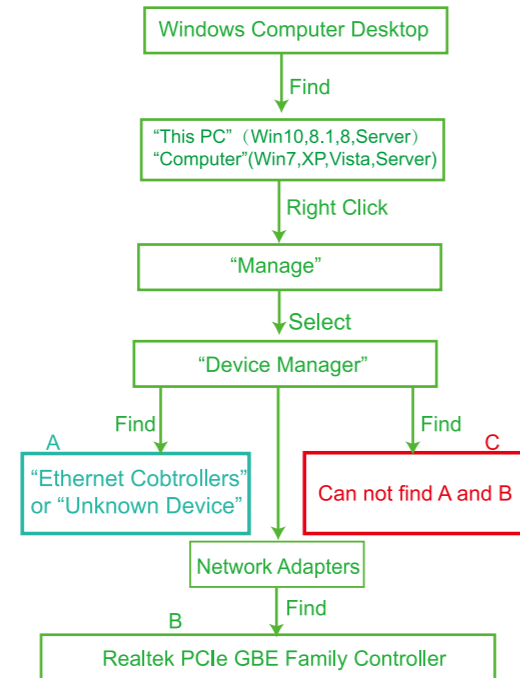
Added on network card RJ45 port

#### Check If Network Card Works on Computers:

1.Users can plug in RJ45 cable from routers check if PC can detect the network or not.If PC have detected the network,then no need to read the rest of this user manual. If PC can-not detect the network then go on read rest of user manual.

6

2.Find this added on network card hardware in Windows system "Device Manager" and check if system read it.



7

**A,Means PCs find hardware correctly need to install driver.**  
**B,Means network card hardware correctly placed and system load driver already can use it now.**  
**C,Means PCs can not find the added on network card and not load driver.1. Users need to re-plug network card on motherboard PCIE slot.2. Users better change to another active PCIE slot for this network card.**

#### Install Driver on Desktop PCs:

1.FS-E1-Pro and FS-E2-Pro are based on Realtek 811 serial network interface controller.These models share same installation steps on Windows 10,8.1,8,7,Vista,XP and Windows Server (32/64bit).

2.Most of Windows 10,8.1,8(32/64bit) and Windows server 2012,2012R2,2016,2019 system will load driver automatically. If it can not auto-load driver ,but read "Ethernet Controller" in Windows "Device Manager",no worry just install driver.

3.Most of Windows 7,Vista,XP(32/64bit) and Windows server 2003,2003R2,2008,2008R2(32/64bit) system will read as "Unknown Device" or "Ethernet Controllers" in "Device Manager",install driver please it will work then.

**Step1,A.**Visit [www.febsmart.com](http://www.febsmart.com)-Bottom of homepage Click "Drivers"-Find model FS-E1-Pro or FS-E2-Pro download "Realtek811" ZIP file and release it.find "Setup.exe" and double right-click.

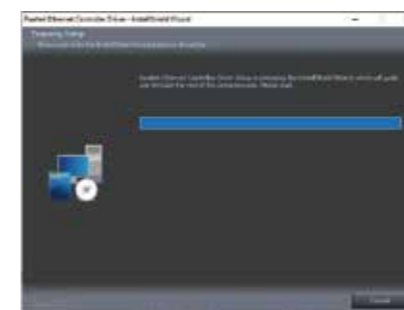
8

**Step2,**Complete driver installation.

1.Doule right-click"Setup.exe"



2.Waiting files ready to install.



9

3.Click "Next"

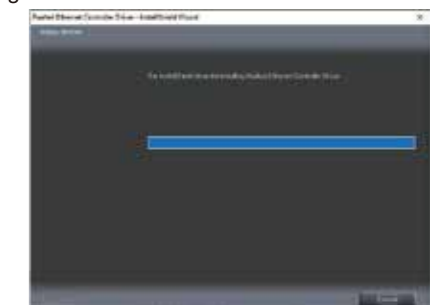


4.Click"Install"



10

5.Waitiing for driver installation.



6.Click "Finish",and start using the new network card.



11